

## General description of the program:

**PDF-XChange Cleanup Tool** - a program for cleaning the Windows system of all programs and data of Tracker Software products.

## The program has several settings:

### == Clean Options ==

/c[s|r|k|f] - sets what to delete (default /cf)  
s - Clean data from the file system  
r - Clean data from the registry and MSI database  
k - Delete keys from the registry (only works in conjunction with the [r] parameter)  
f - Delete all information (equivalent to /csrk)

### == Display Options ==

/quiet - Silent mode (cleaning occurs in the background)  
/passive - Mode in which only progress is shown  
/q[n|p|f] - Sets the operation mode of the program (default /qf)  
n - No UI  
p - Progress only  
f - Full UI (default)  
/help (/h) - Shows a dialog box with information on managing the program

### == Restart Options ==

/norestart - Cleans without restarting the computer  
/promptrestart - Asks for a reboot  
/forcerestart - Restarts your computer as soon as required

### == Logging Options ==

/l[i|w|e|a|u|c|m|p|+|!|\*]  
i - Status messages  
w - Non-fatal warnings  
e - All non-critical errors  
a - Started actions  
u - User prompts  
c - UI initialization  
m - Out of memory, and critical errors  
p - Program settings  
\* - Log all information  
/log - equivalent to /l\*

## A more detailed description of the settings:

### == Clean Options ==

s - with this setting, the program should delete all files located in the following paths:

```
"%CommonProgramFiles%\Tracker Software",
"%CommonProgramFiles(x86)%\Tracker Software",
"%ALLUSERSPROFILE%\Microsoft\Windows\Start Menu\Programs\Tracker Software",
"%USERPROFILE%\\...\All Users\Microsoft\Windows\Start Menu\Programs\Tracker Software",
"%SystemRoot%\System32\spool\drivers\w32x86\3\pxcdrv.dll",
"%SystemRoot%\System32\spool\drivers\w32x86\3\pxcdrv.xml",
"%SystemRoot%\System32\pxcpm.dll",
"%PUBLIC%\Desktop\PDF Tools.lnk",
"%PUBLIC%\Desktop\PDF-XChange Editor.lnk",
"%PUBLIC%\Desktop\PDF-XChange Office2PDF.lnk",
"%APPDATA%\Tracker Software",
"%LOCALAPPDATA%\\...\LocalLow\Temp\PDFXEdit",
"%LOCALAPPDATA%\\...\LocalLow\Temp\PDFXStd",
"%LOCALAPPDATA%\\...\LocalLow\Temp\PDFXEdit.SDK",
"%LOCALAPPDATA%\\...\LocalLow\Temp\PDFXShellExt",
"%LOCALAPPDATA%\Tracker Software",
"%LOCALAPPDATA%\Temp\PDFXEdit",
"%LOCALAPPDATA%\Temp\PDFXStd",
```

```
"%LOCALAPPDATA%\Temp\PDFXEdit.SDK",
"%LOCALAPPDATA%\Temp\PDFXShellExt"
```

These products will also be removed:

```
"Shell Extentions"
"PDF-XChange Editor"
"PDF-XChange Lite"
"PDF-XChange Standard"
"PDF-Tools (4.0)"
"PDF-Tools (6.0)"
"Tracker Updater"
```

r - with this setting, the program should delete all registry data with the following keys:

```
"HKLM\SOFTWARE\Tracker Software\Vault"
"HKCU\SOFTWARE\Tracker Software\Vault"
"HKLM\SOFTWARE\Microsoft\Windows\CurrentVersion\Uninstall"
"HKCR\*\shellex\ContextMenuHandlers\PDFXChange Editor Context menu"
"HKCR\*.pdf"
"HKCR\*.pdtex"
"HKCR\*.pdts"
"HKCR\*.fdf"
"HKCR\*.pdtex"
"HKCR\*.xcesession"
"HKCR\*.xclpack"
"HKCR\*.xcvault"
"HKCR\*.xces"
"HKCR\*.xfdf"
"HKCR\*.xps"
"HKCR\AppData\PDFXCoreAPI.x64.dll"
"HKCR\BrowserIEPlugin.CoPXCEditorIEPlugin"
"HKCR\BrowserIEPlugin.CoPXCEditorIEPlugin.1"
"HKCR\PDFXEdit.FDF"
"HKCR\PDFXEdit.PDF"
"HKCR\PDFXEdit.XCES"
"HKCR\PDFXEdit.XCESESSION"
"HKCR\PDFXEdit.XCLPACK"
"HKCR\PDFXEdit.XFDF"
"HKCR\PDFXEdit.XPS"
"HKCR\PDFXEditor"
"HKCR\PDFXEditor.1"
"HKCR\PDFXTools"
"HKCR\PDFXTools.1"
"HKCR\PDFXTools.PDTEX"
"HKCR\PDFXTools.PDTS"
"HKCR\PXCComLib7.CPXCControlEx"
"HKCR\PXCComLib7.CPXCControlEx.1"
"HKCR\PXCComLib7.CPXCPrinter"
"HKCR\PXCComLib7.CPXCPrinter.1"
"HKCR\PXCIEaddin6.PXCIEaddinBHO"
"HKCR\PXCIEaddin6.PXCIEaddinBHO.1"
"HKCR\PXCOfficeAddin.Addin"
"HKCR\PXCOfficeAddin.Addin.7"
"HKCR\PXCOutlookAddin.Addin"
"HKCR\PXCOutlookAddin.Addin.1"
"HKCR\TrackerUpdateSrvLib.TrackerUpdateObj"
"HKCR\TrackerUpdateSrvLib.TrackerUpdateObj.1"
"HKCR\XCVault"
"HKCR\Installer\Dependencies"
"HKCR\Installer\Features"
"HKCR\Installer\Products"
"HKCR\*\shellex\ContextMenuHandlers\PDFXChange Editor Context menu"
"HKCR\AppData"
"HKCR\Applications\PDFXEdit.exe"
"HKCR\Applications\PDFXTools.exe"
"HKCR\CLSID"
```

"HKCR\\Folder\\ShellEx\\ColumnHandlers"  
"HKCR\\Interface"  
"HKCR\\MIME\\Database\\Content Type\\application/pdf"  
"HKCR\\MIME\\Database\\Content Type\\application/vnd.adobe.xfdf"  
"HKCR\\MIME\\Database\\Content Type\\application/vnd.fdf"  
"HKCR\\SystemFileAssociations\\.pdf"  
"HKCR\\TypeLib"  
"HKCU\\Software\\Microsoft\\Windows\\CurrentVersion\\Explorer\\FileExts\\.pdf"  
"HKCU\\Software\\Microsoft\\Windows\\CurrentVersion\\Explorer\\FileExts\\.pdtex"  
"HKCU\\Software\\Microsoft\\Windows\\CurrentVersion\\Explorer\\FileExts\\.pds"  
"HKCU\\Software\\Microsoft\\Windows\\CurrentVersion\\Explorer\\FileExts\\.xcesession"  
"HKCU\\Software\\Microsoft\\Windows\\CurrentVersion\\Explorer\\FileExts\\.xclpack"  
"HKCU\\Software\\Microsoft\\Windows\\CurrentVersion\\Explorer\\StartPage\\NewShortcuts"  
"HKCU\\Software\\Microsoft\\Windows\\Shell\\Associations\\MIMEAssociations\\application/pdf\\UserChoice"  
"HKCU\\Software\\Microsoft\\Windows\\Shell\\Associations\\MIMEAssociations\\application/vnd.adobe.xfdf\\UserChoice"  
"HKCU\\Software\\Microsoft\\Windows\\Shell\\Associations\\MIMEAssociations\\application/vnd.fdf\\UserChoice"  
"HKCU\\SOFTWARE\\Microsoft\\Windows NT\\CurrentVersion\\AppCompatFlags\\CompatibilityAssistant\\Persisted"  
"HKCU\\SOFTWARE\\Microsoft\\Windows NT\\CurrentVersion\\Devices"  
"HKCU\\SOFTWARE\\Microsoft\\Windows NT\\CurrentVersion\\AppCompatFlags\\CompatibilityAssistant\\Persisted"  
"HKCU\\Software\\Classes\\.pdf"  
"HKCU\\Software\\Classes\\.pdtex"  
"HKCU\\Software\\Classes\\.pds"  
"HKCU\\Software\\Classes\\.xcesession"  
"HKCU\\Software\\Classes\\.xclpack"  
"HKCU\\Software\\Classes\\MIME\\Database\\Content Type\\application/pdf"  
"HKCU\\Software\\Classes\\MIME\\Database\\Content Type\\application/vnd.adobe.xfdf"  
"HKCU\\Software\\Classes\\MIME\\Database\\Content Type\\application/vnd.fdf"  
"HKLM\\SOFTWARE\\Microsoft\\Windows\\CurrentVersion\\Installer\\Folders"  
"HKLM\\SYSTEM\\CurrentControlSet\\Control\\Print\\Environments\\Windows NT x86\\Drivers\\Version-3\\PDF-XChange Standard Driver"  
"HKLM\\SYSTEM\\CurrentControlSet\\Control\\Print\\Environments\\Windows NT x86\\Drivers\\Version-2\\PDF-XChange Standard Driver"  
"HKLM\\SYSTEM\\CurrentControlSet\\Control\\Print\\Environments\\Windows NT x86\\Drivers\\Version-1\\PDF-XChange Standard Driver"  
"HKLM\\SOFTWARE\\MozillaPlugins\\@tracker-software.com/PDF-XChange Editor Plugin,version=1.0,application/pdf"  
"HKLM\\SOFTWARE\\MozillaPlugins\\@tracker-software.com/PDF-XChange Editor Plugin,version=1.0,application/vnd.adobe.xfdf"  
"HKLM\\SOFTWARE\\MozillaPlugins\\@tracker-software.com/PDF-XChange Editor Plugin,version=1.0,application/vnd.fdf"  
"HKCR\\SOFTWARE\\Classes\\.pdf"  
"HKCR\\SOFTWARE\\Classes\\.pdtex"  
"HKCR\\SOFTWARE\\Classes\\.pds"  
"HKCR\\SOFTWARE\\Classes\\.fdf"  
"HKCR\\SOFTWARE\\Classes\\.pdtex"  
"HKCR\\SOFTWARE\\Classes\\.xcesession"  
"HKCR\\SOFTWARE\\Classes\\.xclpack"  
"HKCR\\SOFTWARE\\Classes\\.xcvault"  
"HKCR\\SOFTWARE\\Classes\\.xces"  
"HKCR\\SOFTWARE\\Classes\\.xfdf"  
"HKCR\\SOFTWARE\\Classes\\.xps"  
"HKCR\\SOFTWARE\\Classes\\AppID\\PDFXCoreAPI.x64.dll"  
"HKCR\\SOFTWARE\\Classes\\BrowserIEPlugin.CoPXCEDITORIEPlugin"  
"HKCR\\SOFTWARE\\Classes\\BrowserIEPlugin.CoPXCEDITORIEPlugin.1"  
"HKCR\\SOFTWARE\\Classes\\PDFXEdit.FDF"  
"HKCR\\SOFTWARE\\Classes\\PDFXEdit.PDF"  
"HKCR\\SOFTWARE\\Classes\\PDFXEdit.XCES"  
"HKCR\\SOFTWARE\\Classes\\PDFXEdit.XCESESSION"

"HKCR\\SOFTWARE\\Classes\\PDFXEdit.XCLPACK"  
"HKCR\\SOFTWARE\\Classes\\PDFXEdit.XFDF"  
"HKCR\\SOFTWARE\\Classes\\PDFXEdit.XPS"  
"HKCR\\SOFTWARE\\Classes\\PDFXEditor"  
"HKCR\\SOFTWARE\\Classes\\PDFXEditor.1"  
"HKCR\\SOFTWARE\\Classes\\PDFXTools"  
"HKCR\\SOFTWARE\\Classes\\PDFXTools.1"  
"HKCR\\SOFTWARE\\Classes\\PDFXTools.PDTEX"  
"HKCR\\SOFTWARE\\Classes\\PDFXTools.PDTS"  
"HKCR\\SOFTWARE\\Classes\\PXCComLib7.CPXCControlEx"  
"HKCR\\SOFTWARE\\Classes\\PXCComLib7.CPXCControlEx.1"  
"HKCR\\SOFTWARE\\Classes\\PXCComLib7.CPXCPrinter"  
"HKCR\\SOFTWARE\\Classes\\PXCComLib7.CPXCPrinter.1"  
"HKCR\\SOFTWARE\\Classes\\PXCIEaddin6.PXCIEaddinBHO"  
"HKCR\\SOFTWARE\\Classes\\PXCIEaddin6.PXCIEaddinBHO.1"  
"HKCR\\SOFTWARE\\Classes\\PXCOfficeAddin.Addin"  
"HKCR\\SOFTWARE\\Classes\\PXCOfficeAddin.Addin.7"  
"HKCR\\SOFTWARE\\Classes\\PXCOutlookAddin.Addin"  
"HKCR\\SOFTWARE\\Classes\\PXCOutlookAddin.Addin.1"  
"HKCR\\SOFTWARE\\Classes\\TrackerUpdateSrvLib.TrackerUpdateObj"  
"HKCR\\SOFTWARE\\Classes\\TrackerUpdateSrvLib.TrackerUpdateObj.1"  
"HKCR\\SOFTWARE\\Classes\\XCVault"  
"HKLM\\SOFTWARE\\Classes\\.fdf"  
"HKLM\\SOFTWARE\\Classes\\.pdtex"  
"HKLM\\SOFTWARE\\Classes\\.ppts"  
"HKLM\\SOFTWARE\\Classes\\.xcesession"  
"HKLM\\SOFTWARE\\Classes\\.xclpack"  
"HKLM\\SOFTWARE\\Classes\\.xcvault"  
"HKLM\\SOFTWARE\\Classes\\Installer\\Dependencies"  
"HKLM\\SOFTWARE\\Classes\\Installer\\Features"  
"HKLM\\SOFTWARE\\Classes\\Installer\\Products"  
"HKLM\\SOFTWARE\\Classes\\\*\\shellex\\ContextMenuHandlers\\PDFXChange Editor Context menu"  
"HKLM\\SOFTWARE\\Classes\\.pdf\\OpenWithList"  
"HKLM\\SOFTWARE\\Classes\\.pdf\\PDFXEdit.PDF"  
"HKLM\\SOFTWARE\\Classes\\.pdf\\Shellex"  
"HKLM\\SOFTWARE\\Classes\\.pdf\\OpenWithProgids"  
"HKLM\\SOFTWARE\\Classes\\.xps"  
"HKLM\\SOFTWARE\\Classes\\AppID"  
"HKLM\\SOFTWARE\\Classes\\Applications\\PDFXEdit.exe"  
"HKLM\\SOFTWARE\\Classes\\Applications\\PDFXTools.exe"  
"HKLM\\SOFTWARE\\Classes\\CLSID"  
"HKLM\\SOFTWARE\\Classes\\Folder\\ShellEx\\ColumnHandlers"  
"HKLM\\SOFTWARE\\Classes\\Interface"  
"HKLM\\SOFTWARE\\Classes\\MIME\\Database\\Content Type\\application/pdf"  
"HKLM\\SOFTWARE\\Classes\\MIME\\Database\\Content Type\\application/vnd.adobe.xfdf"  
"HKLM\\SOFTWARE\\Classes\\MIME\\Database\\Content Type\\application/vnd.fdf"  
"HKLM\\SOFTWARE\\Classes\\SystemFileAssociations\\.pdf"  
"HKLM\\SOFTWARE\\Classes\\TypeLib"  
"HKLM\\SOFTWARE\\Microsoft\\Internet Explorer\\Toolbar"  
"HKLM\\SOFTWARE\\Microsoft\\Internet Explorer\\Low Rights\\ElevationPolicy"  
"HKLM\\SOFTWARE\\Microsoft\\Internet Explorer\\MAIN\\FeatureControl\\FEATURE\_IVIEWOBJECTDRAW\_DMLT9\_WITH\_GDI"  
"HKLM\\SOFTWARE\\Microsoft\\Internet Explorer\\MAIN\\FeatureControl\\FEATURE\_BROWSER\_EMULATION"  
"HKLM\\SOFTWARE\\Microsoft\\Office\\Excel\\AddIns\\PXCOfficeAddin.Addin"  
"HKLM\\SOFTWARE\\Microsoft\\Office\\PowerPoint\\AddIns\\PXCOfficeAddin.Addin"  
"HKLM\\SOFTWARE\\Microsoft\\Office\\Publisher\\AddIns\\PXCOfficeAddin.Addin"  
"HKLM\\SOFTWARE\\Microsoft\\Office\\Word\\AddIns\\PXCOfficeAddin.Addin"  
"HKLM\\SOFTWARE\\Microsoft\\Office\\Outlook\\Addins\\PXCOutlookAddin.Addin"  
"HKLM\\SOFTWARE\\Microsoft\\Windows\\CurrentVersion\\App Paths\\PDFXEdit.exe"  
"HKLM\\SOFTWARE\\Microsoft\\Windows\\CurrentVersion\\Installer\\Folders"  
"HKLM\\SOFTWARE\\Microsoft\\Windows\\CurrentVersion\\Installer\\UserData\\S-1-5-18\\Components"  
"HKLM\\SOFTWARE\\Microsoft\\Windows\\CurrentVersion\\Installer\\UserData\\S-1-5-18\\Products"  
"HKLM\\SOFTWARE\\Microsoft\\Windows\\CurrentVersion\\PreviewHandlers"

```
"HKLM\\SOFTWARE\\Microsoft\\Windows\\CurrentVersion\\PropertySystem\\PropertyHandlers\\.pdf"
"HKLM\\SOFTWARE\\Microsoft\\Windows\\CurrentVersion\\PropertySystem\\PropertySchema"
"HKLM\\SOFTWARE\\Microsoft\\Windows\\CurrentVersion\\Shell Extensions\\Approved"
"HKLM\\SOFTWARE\\Microsoft\\Windows NT\\CurrentVersion\\Print\\Printers\\PDF-XChange Standard"
"HKLM\\SOFTWARE\\Microsoft\\Windows NT\\CurrentVersion\\Print\\Printers\\PDF-XChange Lite"
"HKLM\\SOFTWARE\\RegisteredApplications"
"HKLM\\SYSTEM\\CurrentControlSet\\Control\\Print\\Monitors\\PDF-XChange Standard Port Monitor"
"HKLM\\SYSTEM\\CurrentControlSet\\Control\\Print\\Monitors\\PDF-XChange Standard"
"HKU\\.DEFAULT\\Software\\Tracker Software"
"HKU\\.DEFAULT\\Software\\Microsoft\\Windows NT\\CurrentVersion"
"HKU\\.DEFAULT\\Software\\Microsoft\\Windows NT\\CurrentVersion\\Windows"
```

Also, in the MSI database, it will remove products by GUIDs:

```
"{03C51559-20F6-4A2A-9FB9-98CB5B612FBA}",
"{F363AF73-86E7-4782-87FA-F3C14FA4D395}",
"{6D984C98-DD4A-4F2C-8D21-767D955C7FC4}",
"{9AC998B9-BD41-46DC-8F08-0DE2A4A1EB4D}",
"{0F703784-D88E-4071-85D1-77D81884FB43}",
"{1BFE8B19-AF58-4130-8237-30130126399F}",
"{0A909602-6CB4-4CD3-AC7A-6808D8F272BD}",
"{8B29DB03-A8AB-4B2B-ABA8-3A7DF2CE0096}",
"{B2849380-B99D-45BD-83FA-0A19CC82F960}",
"{793A5AF1-EB05-4381-A503-31ACE7C6B9C4}",
"{E6E58382-7F0B-4DB0-8E8F-4EF5D581109A}",
"{E9FA95C0-6FCE-437E-9EFB-ACEA250E6D53}",
"{CA231CAC-3C44-45AD-BB95-0F6288945DF6}",
"{B0A987BC-5E91-4930-9437-ABFFA517DBE1}",
"{7B4AA549-74FB-48D5-806C-C142F921F382}",
"{CDB43E78-3E0B-432B-8F6E-13FE653DCC34}",
"{2699F56C-713F-44EA-970D-DCE872E29992}",
"{58B7471D-F3CC-4D9B-999C-AA1E5A2F3EE2}",
"{E900D0EF-EFD5-4E85-A9B1-8E39661866AD}",
"{76F4CAD5-2D22-4BEE-B292-FBC74ACAAF8E}"
```

And it will look for GUIDs of products in the MSI with these parameters

```
InstalledProductName: "PDF-XChange", "PDF-Tools", "Tracker Updater",
HelpLink: "tracker-software",
Publisher: "Tracker Software"
```

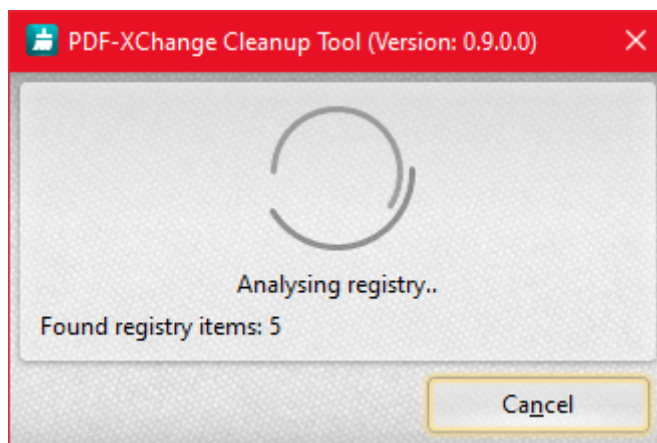
**k** - Delete registry keys (only works in conjunction with the **[r]** parameter) - deletes registry entries with keys, specifically:

```
"HKLM\\SOFTWARE\\Tracker Software\\Vault"
"HKCU\\SOFTWARE\\Tracker Software\\Vault"
```

**== Display Options ==**

**/quiet** or **/qn** - This mode runs the program in the background. It will quietly find all the data and delete it.

**/passive** или **/qp** - This mode displays a progress window (Fig. 1), which enables the ability to stop the program before cleaning starts. (When searching in the registry, the number of keys will be shown, and in the file system - the size of the files found)

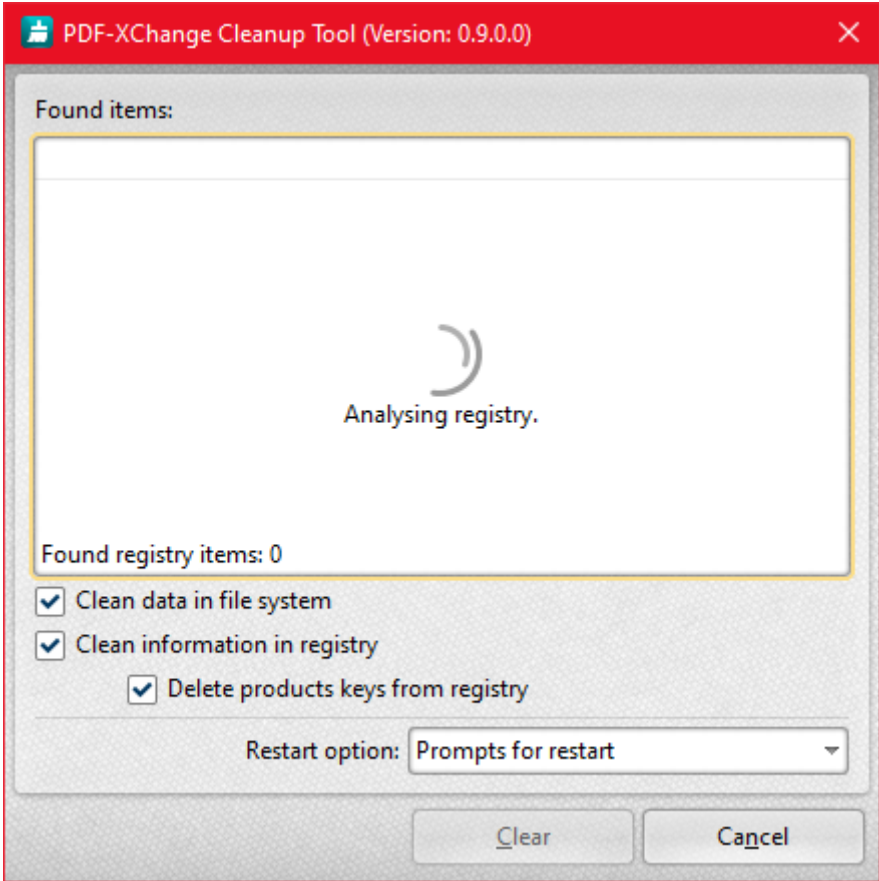


(fig.1)

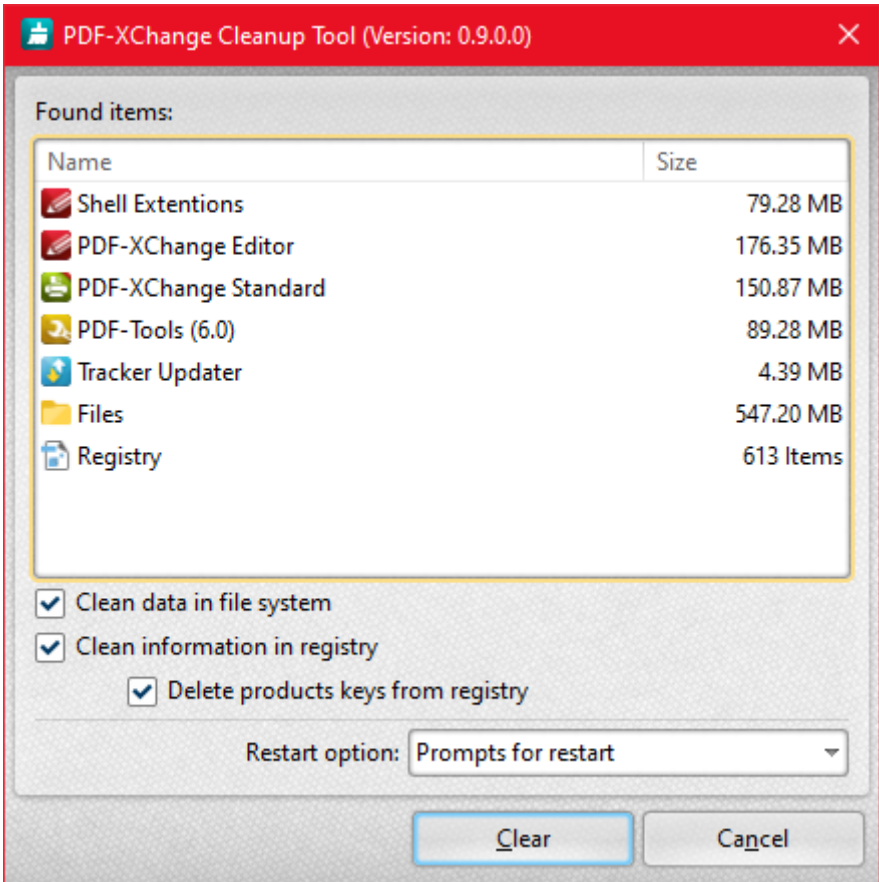
**/qf** - The result of this mode will be a dialog with the progress during the search (Fig. 2) - after something is found, the dialog list will reflect what was found.



This window will show the names of the products, the size they take, the size of the files that were found, and the number of registry entries (this number also includes GUIDs with MSI) (Fig. 3)



(fig. 2)



(fig. 3)

When these two switches /qp and /qf are used, the process cannot be canceled.

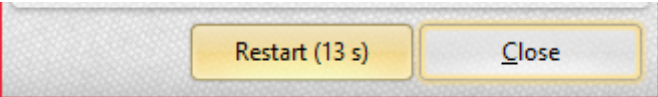
### **== Restart Options ==**

**/norestart** - do not restart the computer after cleaning.

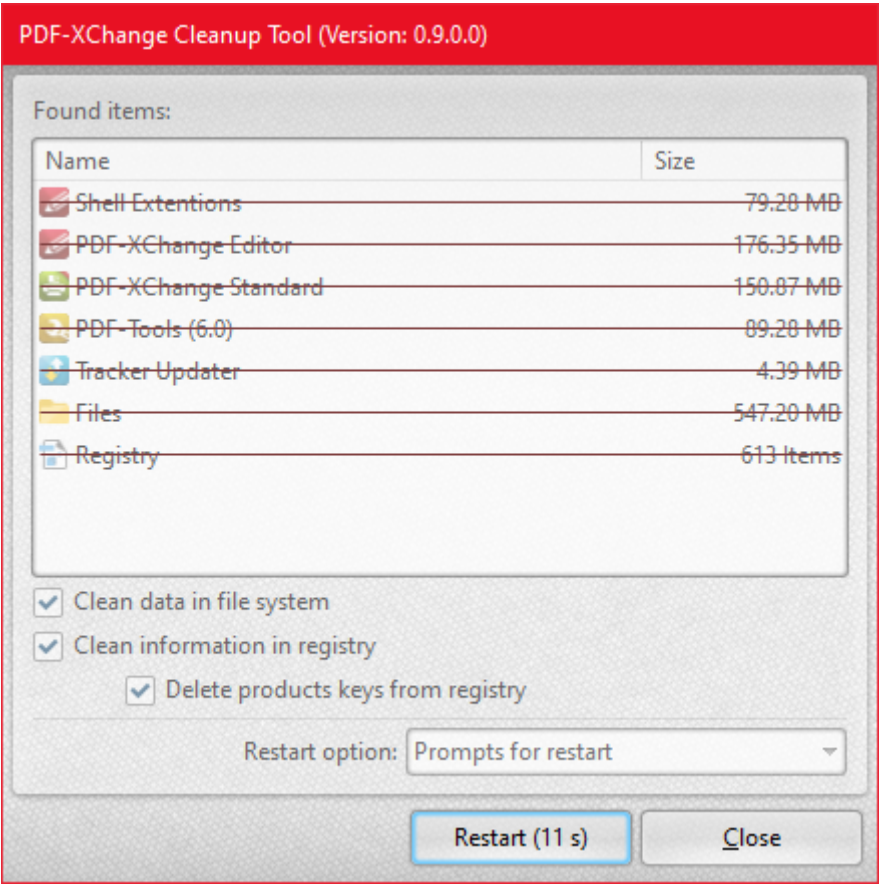
If, during deletion, it becomes necessary to restart the computer, this option will forbid it. Information about whether you need to restart the PC can be found in the log.

**/promptrestart** - ask before reboot

If, during deletion, it becomes necessary to restart the PC, then /qp and /qf will prompt the user to confirm the reboot (Fig. 4-5). If "cancel" is not pressed within 15 seconds, the computer will reboot.



(fig. 4)



(fig. 5)

**/forcerestart** - restart the computer as soon as it is required. If, during deletion, it becomes necessary to restart the PC, the computer will reboot without prompting.

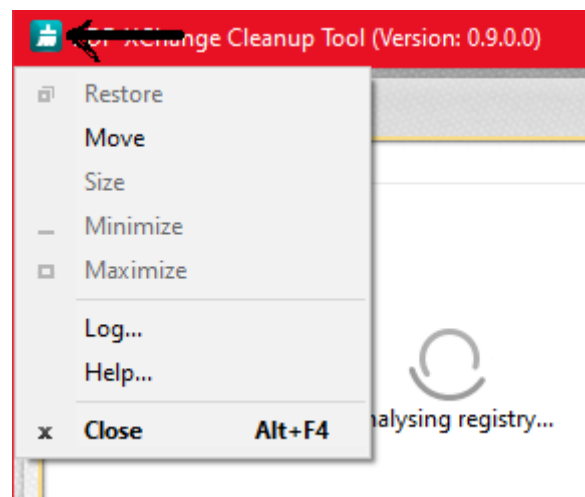
**== Logging Options ==**

- /l[i|w|e|a|u|c|m|p|+|!|\*] - logging what happens during the operation of the cleaner.
  - i - Status messages - logging of everything completed.
  - w - Non-fatal warning - logging everything that it was not possible to delete or read, but allowing the user to continue working afterwards.
  - e - All non-critical errors - errors that occur when working with the registry/file system/MSI will be logged.
  - a - Starting actions - starting certain actions, starting analysis or checking a key.
  - u - User requests - clicks and changes in the settings of the cleaner made by the user.
  - c - UI initialization - loading icons, themes, and dialog boxes.
  - m - Memory out of bounds, and critical errors after which subsequent work of the cleaner is no longer possible.
  - p - Program settings - input settings for the cleaner.

The log is written to the Temp folder (% TEMP%). It can be easily found if the files are sorted by date modified (but note that since the P7 logger is used, you cannot set the names of the log file yourself).

**Dialog window menu:**

- 1) There is a "Help" dialog box that can be accessed from several places: - via consoles <path to the cleaner's executable> /h, through the progress dialog box and through the UI as detailed in (fig. 6)



(fig. 6)

2) There is a "Log" dialog box that is for viewing the log after the end of the cleaner. You can get to it only through the UI from the cleaner's dialog box or the "Help" dialog box.